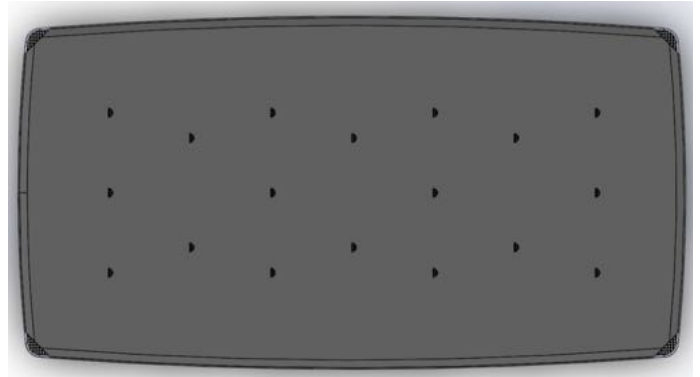


LAKEMAT PRO — Top View

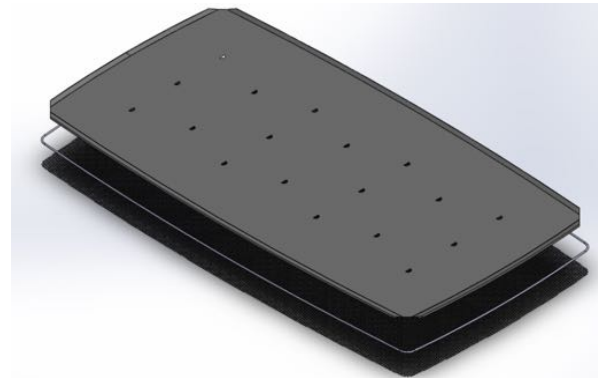
Our rigid, aluminized-steel frame, inserts into pockets sewn on the edges of our “non-woven” polypropylene fabric holding the LakeMat Pro fabric taut.

(Half-moon shapes are “gas-release flaps,” allowing gases to escape).



LAKEMAT PRO — Exploded View

This drawing illustrates how the mat stretches over the frame. The darker “grid” beneath it is added when a “MuckMat Pro” is needed to create a firm surface over soft, mucky lake bottoms.



LAKEMAT PRO — Easy Installation

Note: The LakeMat Pro framing system (*patent pending*) makes installation and moving very simple for one or two people.

Dry weight averages 60 lbs.

The weight of the frame holds the LakeMat Pro on the lake bottom.

Plastic stakes are provided, but usually aren't necessary.



LAKEMAT PRO is **100% Guaranteed** effective. In most cases, four weeks is long enough to control all lake weeds beneath it. Our testing results show the treated area remains 95% to 99% weed-free for the remainder of the swimming season.